



## Richmond

A well located inner city 1st floor unit with excellent access to buses, trains and trams to the CBD and beyond. Minutes walk from the MCG, the shopping mecca of Bridge Road fashion houses and Victoria Street café life. Easy access to Epworth Hospital and a range of inner city university campuses.

This property is ideal for couples and travelers. Minimum stay 1 week.\* (\*Conditions apply)

### Features & Fittings

- Sleeps 2
- 1 bedroom - with queen bed
- 1 bathroom: bath, shower over bath, hand basin & toilet
- Wall heater
- Fan
- Shared laundry with washing machine. Laundromat close by
- Ironing kit
- 1 off street parking space
- TV, DVD & clock radio

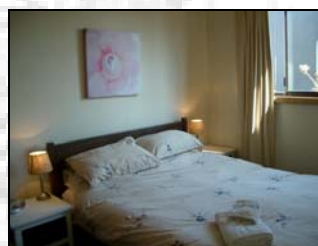
- Modern full kitchen - microwave, oven, stove, catering, cutlery & utensils

### Services

- Electricity, water & maintenance are included (for normal usage)
- Phone available

### Location

- Melways map ref: 44 D8
- Easy walking distance to public transport - bus, train & tram
- Approx 3.5Km from CBD



Visit [www.australianhomeaway.com.au](http://www.australianhomeaway.com.au) to view our other properties in

- Melbourne CBD • Docklands • Moonee Ponds
- Box Hill • Doncaster area • Heathmont • Ringwood • Wonga Park • Dandenong

For reservations call +61 3 9722 2046 or email [austhome@virtual.net.au](mailto:austhome@virtual.net.au)